



Our Technologies Realize Your Dreams

Torque limiter R type

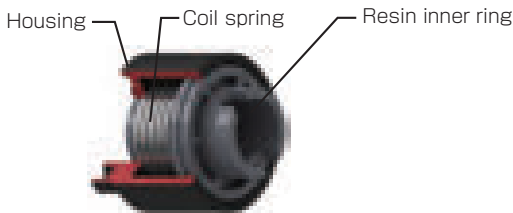
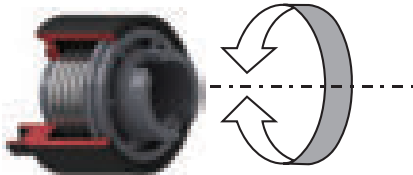


Torque limiters are also called slipping clutches, and are a mechanical component that is mainly used in the paper feed mechanisms of office equipment such as printers and photocopier.

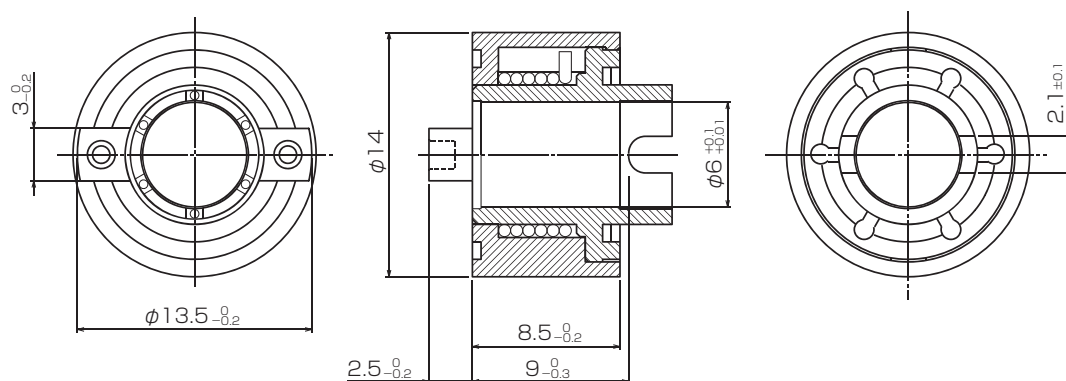
"OTL-R type" torque limiters have reduced size and weight by changing the inner ring material from sintered alloy to resin molded product that can be molded with thin wall thickness.



01 Specifications for the Standard Models

Component parts	Operation
 <p>Housing, Coil spring, Resin inner ring</p>	<p>Torque can be generated in both directions</p>  <p>Note: One direction is also possible if desired.</p>

Dimensions



Setting torque value according

Type	Unit	Torque setting range (Standard models)	Standard torque value
OTLR6-□□□AF (□:Torque value gf·cm)	mN·m	9.8 to 49.0 mN·m	9.81 mN·m Steps
	gf·cm	100 to 500 gf·cm	100 gf·cm Steps

02 Features

1. Compact size and light weight

- Outer diameter: $\phi 14$, weight: 1.5gw. It is the reduction in size and weight from our current products OTLC and OTLV

2. Slips in both rotating directions

- Used for turning in both directions (clockwise and counter-clockwise).

3. Series of Torque Range

- The same configuration and dimensions for the range from 9.81 to 49.0mN·m (100 to 500 gf·cm).
- No need to change the attachment parts when selecting the load torque or changing.

03 Reliability

Type	Nominal torque	Torque tolerance (at shipping)
OTLR6-100~200AF	Less than 29.4 mN·m	Nominal torque $\pm 15\%$
OTLR6-300~500AF	More than 29.4 mN·m	Nominal torque $\pm 10\%$

Note: Please consult with us for non-standard torque tolerances.

04 Operation Environment

Operation environment	Recommended ranges
Temperature	0 to 60 °C
Humidity	90%RH or less
Rotation speed	50 to 400rpm

Note) · Please consult us if you use Origin products under different operation environment not specified above.

· Since the operation environment described here is based on our experiences and testing data, it may not be applied to the products in same way under different circumstances. For this reason, we do not guarantee that the content of this catalogue will apply to your operation condition exactly in the same way. Please make final decision at one of your company premises before using this product.

05 Shaft Specifications

Specification head	Specifications of adaptable shaft
Outer diameter	$\phi 6_{-0.03}^0$
Materials	Use steel such as SUM, SUS and SUJ-2.

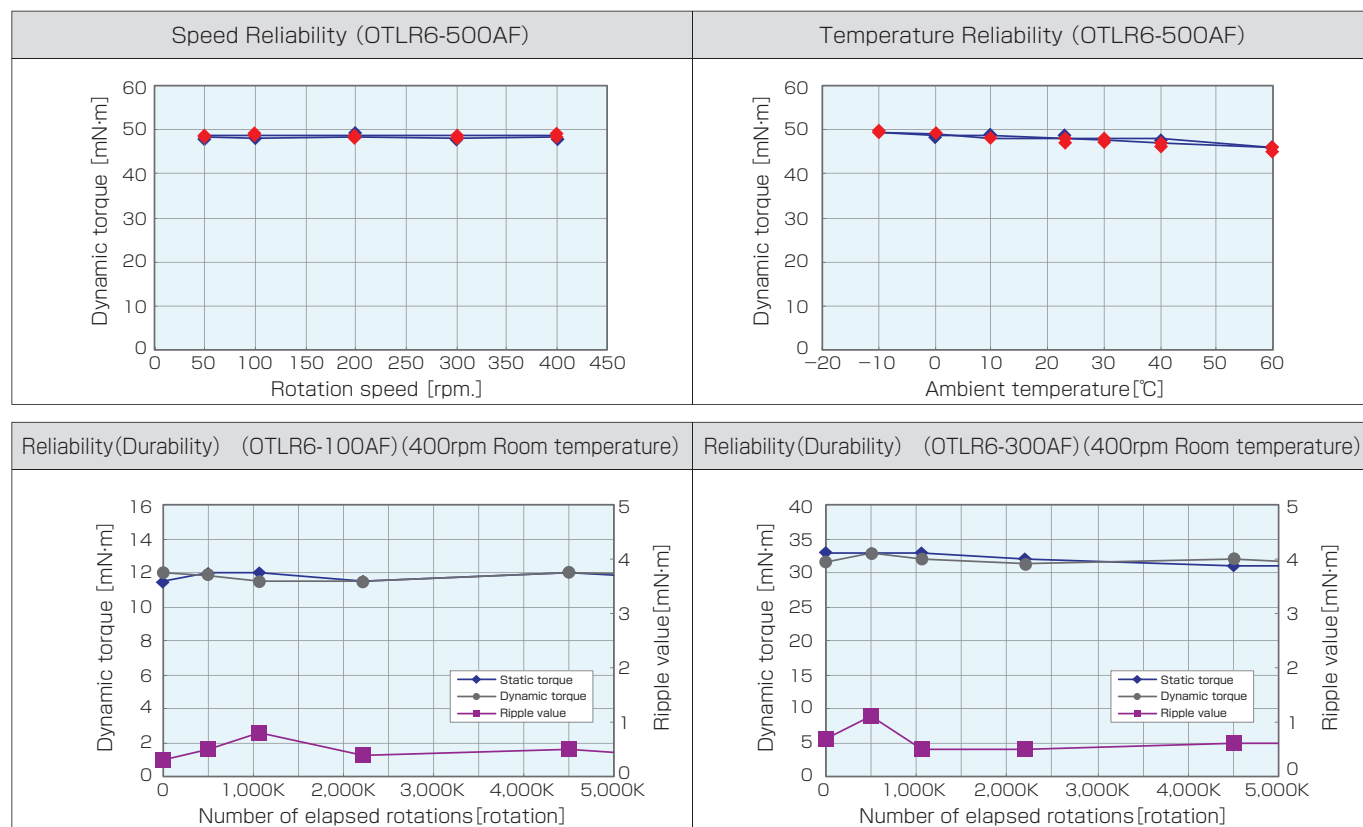
06 Cautions

Cares must be taken when mounting the Torque limiter since the torque may vary when unbalanced loads are applied in the radial and/or axial direction.

07 Please Check the Specifications

The conditions for the specifications are given in the separate "Torque Limiter Requested Specifications Checklist". Please check these.

08 Reference Data





Origin Co., Ltd.

<http://www.origin.co.jp/eng>

Sales Office	3-10-5, Akatsuki, Oyama-Shi, tochigi-Ken 329-0211, Japan Sales Dept, Component Div.	Tel:+81-285-45-1115 Fax:+81-285-45-1236
Osaka Branch Office	Room812, Osaka Ekimae No.4 Bldg., 1-11-4-800, Umeda, Kita-ku, Osaka 530-0001	Tel:+81-6-6345-8866 Fax:+81-6-6345-8854
Origin Electric Co., Ltd. Taiwan Branch Office	99F., No.110, Fuxing Rd., Taoyuan Dist, Taoyuan City 33066, Taiwan(R.O.C.)	Tel:+886-3-332-6665 Fax:+886-3-332-8609
Origin Electric Co., Ltd. Kowloon Office	Unit 1706-7, 17/F, Saxon Tower, 7 Cheung Shun Street, Kln, H.K.	Tel:+852-2314-8811 Fax:+852-2314-8823
Mamada Plant	3-10-5, Akatsuki, Oyama-shi, Tochigi-ken, 329-0211, Japan	Tel:+81-285-45-1111 Fax:+81-285-45-8337

■ Subsidiaries

Origin Electric America Co., Ltd.	3848 Carson Street Suite 216, Torrance, CA 90503, USA	Tel:+1-310-540-6750 Fax:+1-310-540-6376
Origin Precision Machine (Shanghai) Co., Ltd.	3/F, No.26 Bldg., No.115 West Fute First Rd. Pilot Free Trade Zone, Shanghai, 200131 China	Tel:+86-21-5046-2341 Fax:+86-21-5046-2342

Safety
Warning

The data presented in this catalog are for general application purposes. Do not use this product in such a way that may be harmful to people or exceed its performance.

Safety
Precaution

To avoid accidents and/or failures as well as to ensure safety , do not use this product exceeding the specifications noted in this catalog and ignoring the precautions.

*Specifications are subject to change without a notice for future development.