



Our Technologies Realize Your Dreams

Thrust Bearings



Thrust bearings are bearings that are designed to bear load purely in the thrust direction. They are machined with a high precision ball rotation groove, even for extremely small types, and are widely used in high and medium speed precision mechanisms that require durability.

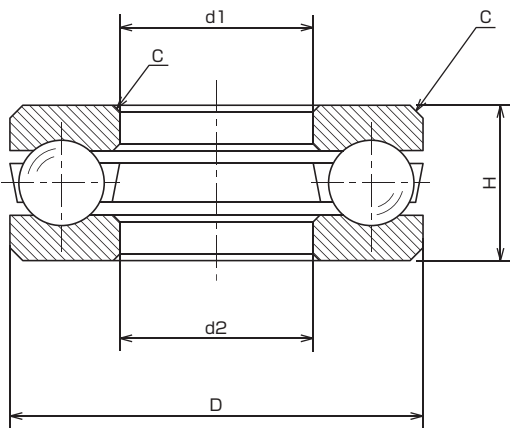


01 Specifications for the Standard Models

Naming and auxiliary symbols

Material codes	Bearing numbers	
	Bearing type codes	Size codes
CR	T	9 – 17
CR =SUJ-2 High chrome bearing steel SS =Martensite stainless steel	T =Thrust bearing	Rotating ring bore – Fixed ring o.d (mm)

Thrust Bearings



CRT-, SST-

1. Unless otherwise noted, the standard oil are enclosed as lubricant.
2. Customized products for special applications are fabricated upon requests.
3. A material for the balls is high chrome bearing steel. (or martensite stainless steel.)

Thrust Bearings

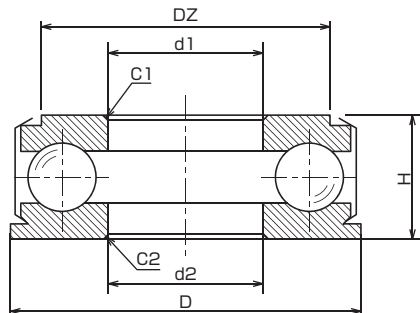
Unit=mm

Nominal Number	Rotating ring bore $d1 \begin{smallmatrix} 0 \\ -0.008 \end{smallmatrix}$	Fixed ring bore $d2 \pm 0.05$	Outside dia. $D \begin{smallmatrix} 0 \\ -0.008 \end{smallmatrix}$	Height $H \begin{smallmatrix} 0 \\ -0.07 \end{smallmatrix}$	Chamfer (c)	Rated load Dynamic load (N)
T 3 – 8	3	3.2	8	3.5	0.2	1797
T 4 – 9	4	4.2	9	4	0.2	1873
T 5 – 10	5	5.2	10	4	0.2	1173
T 6 – 12	6	6.2	12	4.5	0.2	1810
T 7 – 15	7	7.2	15	5.5	0.3	3949
T 8 – 16	8	8.2	16	5	0.3	3886
T 9 – 17	9	9.2	17	5	0.3	3796
T 9 – 19	9	9.2	19	6.5	0.3	5529
T 10 – 18	10	10.2	18	5.5	0.3	2458
T 10 – 20	10	10.2	20	6.5	0.3	5402
T 12 – 23	12	12.2	23	7.5	0.3	7211

02 Special Applications

Please consult us when using for the special applications in the figure shown below.

Thrust Shielded Bearings



CRT-fZ, SST-fZ

1. Unless otherwise noted, the standard oil is enclosed as lubricant.
2. Customized products for special applications are fabricated upon request.
3. A material for the balls is high chrome bearing steel.
(or martensite stainless steel.)

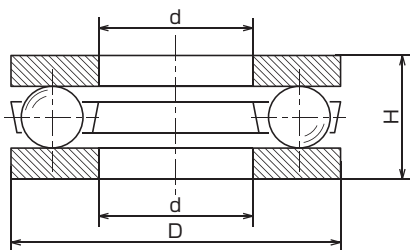
Thrust Shielded Bearings

Unit=mm

Nominal Number	Rotating ring bore $d1^{+0.05}_0$	Fixed ring bore $d2^{+0.1}_0$	Outside dia. $D^{+0.02}_{-0.05}$	Height $H^0_{-0.07}$	Land dia. (DZ)	Chamfer (C ₁ /C ₂)	Basic rated Load Dynamic load (N)
T 4 - 6.3 f Z	4	4.1	6.3	5	5.1	0.2/0.2	510
T 6 - 9.8 f Z	6	6.1	9.8	5	8	0.3/0.2	1083
T 7 - 11.8 f Z	7	7.1	11.8	5	10	0.5/0.2	1847
T 9 - 13.8 f Z 5	9	9.1	13.8	5	11.5	0.5/0.2	1860
T 9 - 13.8 f Z 6.5	9	9.1	13.8	6.5	11.5	0.5/0.2	1860
T 10 - 15.3 f Z	10	10.1	15.3	6.5	13.6	0.5/0.2	2649
T 13 - 19.3 f Z	13	13.1	19.3	7	17.6	0.5/0.2	3796
T 15 - 23.3 f Z	15	15.1	23.3	7.5	20	0.5/0.2	5962

Note) Thrust Shielded Bearing are make-to-order production. Please consult us before placing an order.

Thrust Flat Bearings



SKT-

1. Unless otherwise noted, the standard oil is enclosed as lubricant.
2. Customized products for special applications are fabricated upon request.
3. A material for the balls is high chrome bearing steel.
A material for the retainer is stainless steel.

Thrust Flat Bearings

Unit=mm

Nominal Number	Bore $d \pm 0.1$	Outside dia. $D \pm 0.1$	Height $H \pm 0.1$	Basic rated load Dynamic load (N)
SKT 3 - 8	3	8	2.78	90
SKT 4 - 9	4	9	2.78	99
SKT 6 - 12	6	12	4.5	137
SKT 8 - 16	8	16	5	294
SKT 10 - 18	10	18	4.78	242
SKT 12 - 20 (24)	12	20(24)	5.6	356

Note) Thrust Flat Bearing are make-to-order production. Please consult us before placing an order.



Origin Co., Ltd.

<http://www.origin.co.jp/eng>

Sales Office	3-10-5, Akatsuki, Oyama-Shi, tochigi-Ken 329-0211, Japan Sales Dept, Component Div.	Tel:+81-285-45-1115 Fax:+81-285-45-1236
Osaka Branch Office	Room812, Osaka Ekimae No.4 Bldg., 1-11-4-800, Umeda, Kita-ku, Osaka 530-0001	Tel:+81-6-6345-8866 Fax:+81-6-6345-8854
Origin Electric Co., Ltd. Taiwan Branch Office	99F, No.110, Fuxing Rd., Taoyuan Dist, Taoyuan City 33066, Taiwan(R.O.C.)	Tel:+886-3-332-6665 Fax:+886-3-332-8609
Origin Electric Co., Ltd. Kowloon Office	Unit 1706-7, 17/F, Saxon Tower, 7 Cheung Shun Street, Kln, H.K.	Tel:+852-2314-8811 Fax:+852-2314-8823
Mamada Plant	3-10-5, Akatsuki, Oyama-shi, Tochigi-ken, 329-0211, Japan	Tel:+81-285-45-1111 Fax:+81-285-45-8337

■ Subsidiaries

Origin Electric America Co., Ltd.	3848 Carson Street Suite 216, Torrance, CA 90503, USA	Tel:+1-310-540-6750 Fax:+1-310-540-6376
Origin Precision Machine (Shanghai) Co., Ltd.	3/F, No.26 Bldg., No.115 West Fute First Rd. Pilot Free Trade Zone, Shanghai, 200131 China	Tel:+86-21-5046-2341 Fax:+86-21-5046-2342

Safety
Warning

The data presented in this catalog are for general application purposes. Do not use this product in such a way that may be harmful to people or exceed its performance.

Safety
Precaution

To avoid accidents and/or failures as well as to ensure safety , do not use this product exceeding the specifications noted in this catalog and ignoring the precautions.

*Specifications are subject to change without a notice for future development.